

# WORLD EQUESTRIAN GAMES



## TRANSPORTATION PLAN UPDATE

44 Days And Counting



# 2010 World Equestrian Games Overview

- September 25 – October 10, 2010
- 44 Days and Counting
- Held Every Four Years – Started in 1990
- Comprised of Eight Events
  - Show Jumping, Dressage, Eventing (Rolex), Driving, Endurance, Vaulting, Reining, Par-Equestrian



# 2010 World Equestrian Games Overview

- Previous Event held in Germany
  - 773 Athletes / 852 Horses / 61 Nations / 570,000 Spectators
- FEI – International Governing Body
  - Over 130 Member Countries
  - [Feigames2010.org](http://Feigames2010.org)





# Transportation Participants

- 2010 World Games Foundation
  - Game Day Management
- Kentucky Transportation Cabinet - FHWA
  - HDR | PB | GSP
- Kentucky Finance Cabinet
- Kentucky Horse Park
- Horse Park Foundation
- Lexington Fayette Urban County Government
- City of Georgetown
- LexTran
- Homeland Security

# KENTUCKY HORSE PARK IDENTIFICATION PLAN



# WORLD EQUESTRIAN GAMES



## TRANSPORTATION PLAN UPDATE

# Modeling & Visualization



# Modeling & Visualization

- Traffic analysis has been on-going from beginning of project
- Assumptions based on a series of 'moving targets'
- The analysis has occurred in two phases:
  - Phase I - Early Models
    - Based on general schedule provided by WEG
    - Focused on large area to identify potential problems
    - Included ramp improvements to Iron Works Pike
  - Phase II – Recent Models
    - Based on more detailed schedule
    - Focused on Interstate, Iron Works Pike and Newtown Pike



# Modeling & Visualization

- Phase I
  - Traffic Analysis began when Games Foundation provided preliminary schedule to Project Team
  - Schedule was then broken down further which included many assumptions
  - Worst Case Scenarios (Arrivals / Departures / Transition)
  - Worst Case for Surrounding Roadway Network
  - Parking (due to limited space on-site)
  - Hotel Locations
  - Bus Shuttle Routes
  - Vehicles / Occupancies

# Modeling & Visualization

- Phase II
  - The recent traffic analysis has focused on:
    - Using more up-to-date schedule / assumptions
    - Using week by week ticket sales information
    - Investigating how I-75 / I-64, Iron Works Pike, and Newtown Pike will operate

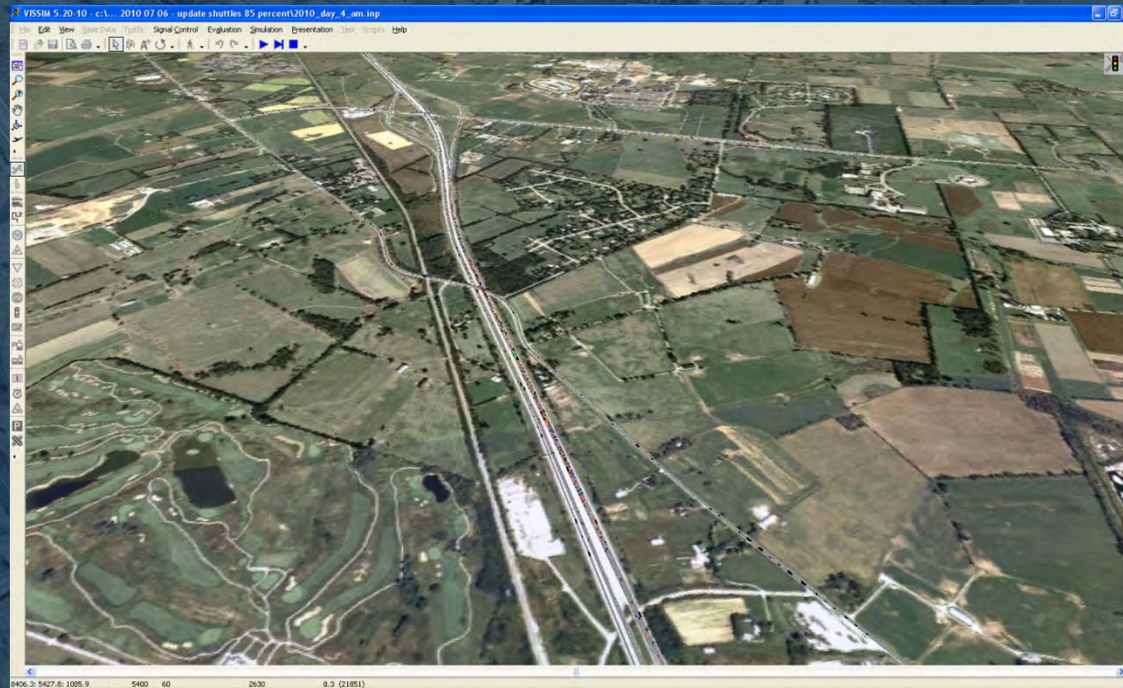


# Modeling & Visualization

- Phase II
  - Tickets Sales:
    - Current ticket sales indicate that many events will not achieve complete sellout.
    - A target of 65% of tickets sales was identified as the trigger at which overflow parking may be needed.
  - Model Scenarios:
    - 65%: Could trigger overflow parking
    - 85%: A 'what if' scenario

# Modeling & Visualization

- Goals of Modeling:
  - How far will traffic back up on interstate?
  - How long with the traffic back up on interstate?
  - How many days will traffic back up on interstate?



# WORLD EQUESTRIAN GAMES



## TRANSPORTATION PLAN UPDATE

# Special Event Permit Traffic Management Plan

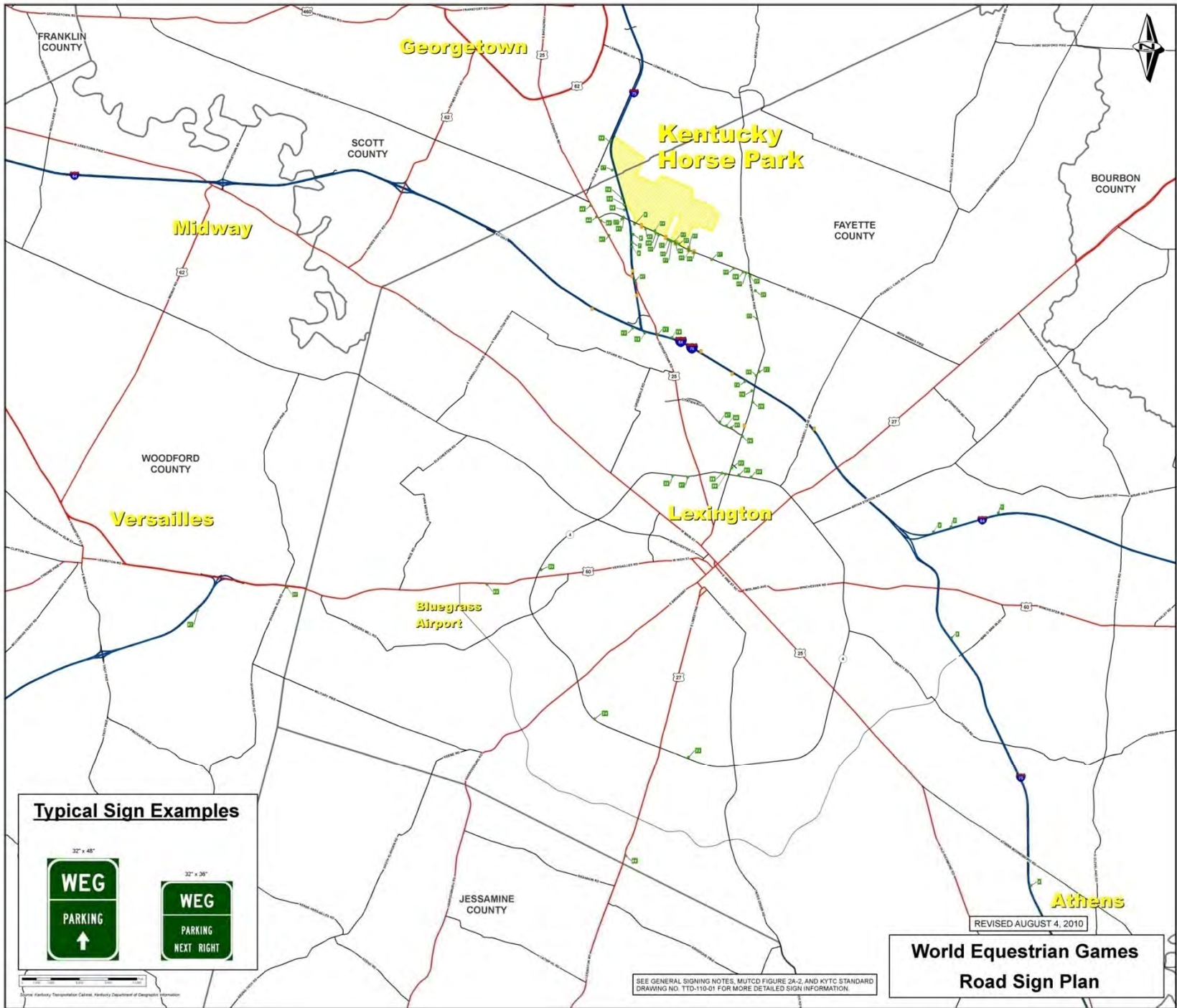


# Elements of the Special Events Permit

- Signed Encroachment Permit
- Traffic Analysis
- Directional Signing
- Traffic Management Plans
- Changeable Message Signs
- Road Crossings / Temporary Road Closures







**Typical Sign Examples**



REVISED AUGUST 4, 2010

**World Equestrian Games  
Road Sign Plan**

SEE GENERAL SIGNING NOTES, MUTCD FIGURE 2A-2, AND KYTC STANDARD DRAWING NO. TTD-110-01 FOR MORE DETAILED SIGN INFORMATION.

Source: Kentucky Transportation Cabinet, Kentucky Department of Geospatial Information

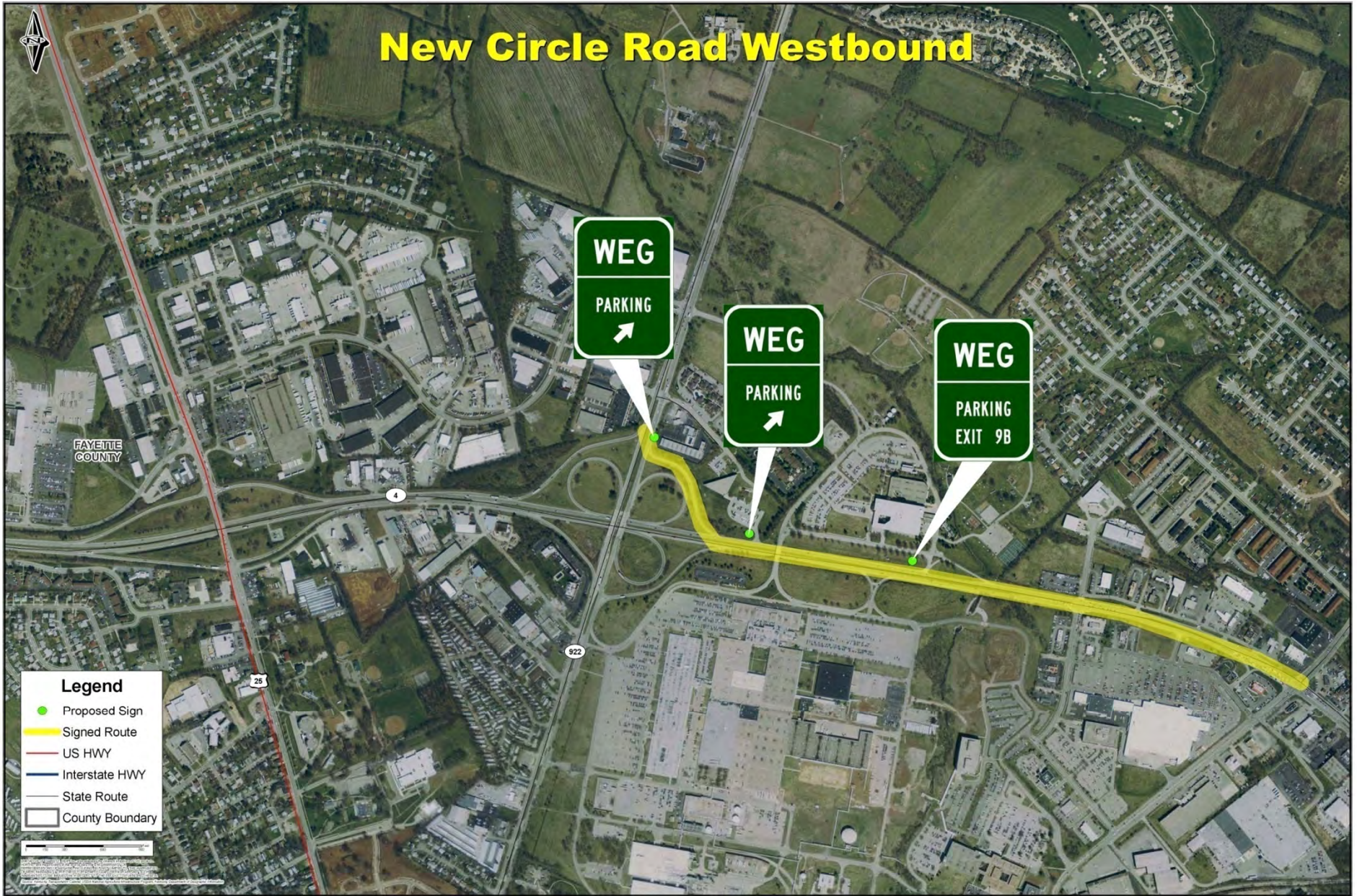




# New Circle Road Westbound



# New Circle Road Westbound



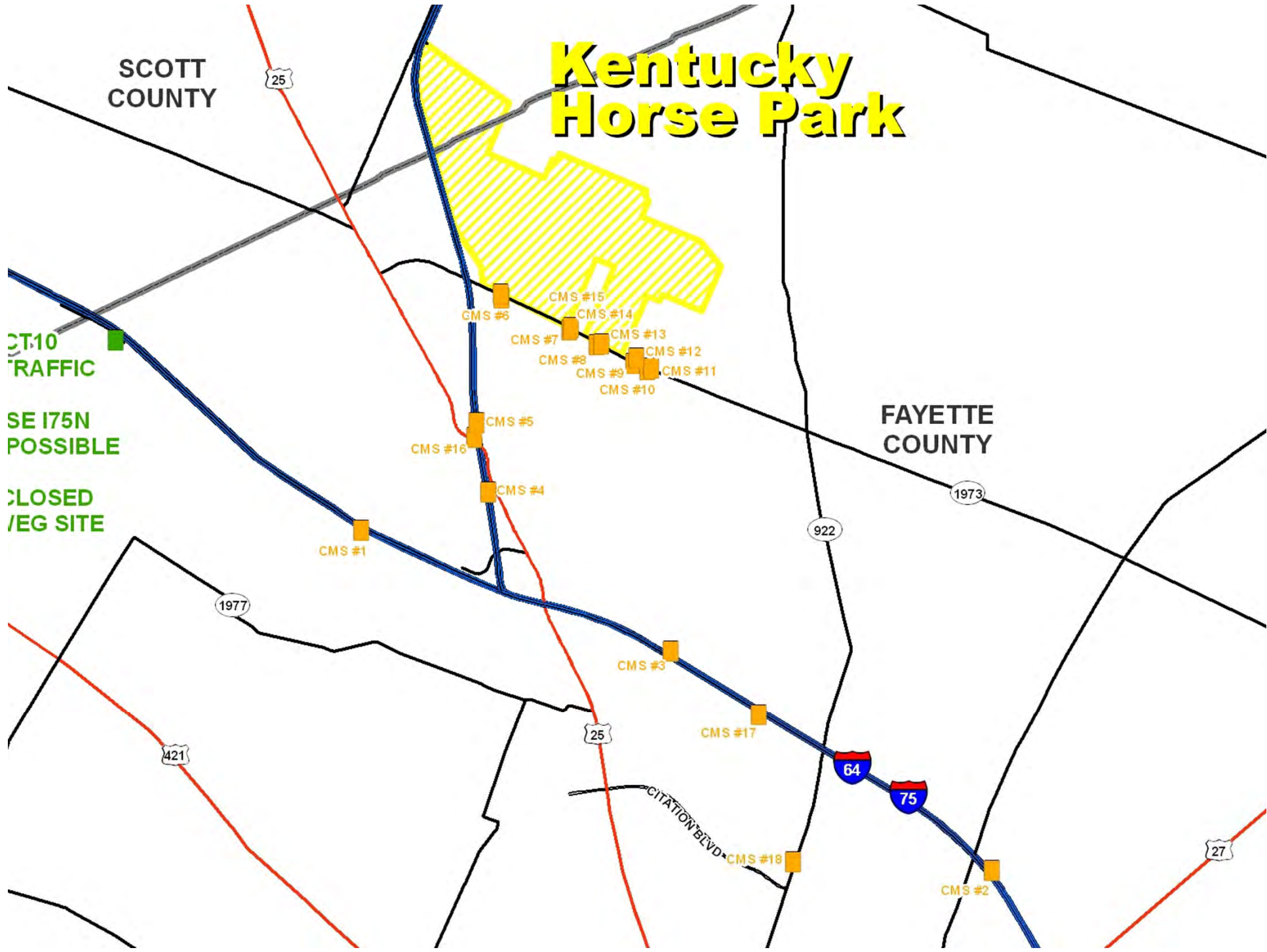
# Elements of the TMP

- On-Site Parking
- Parking Re-fill
- Overflow Parking
- Contingency Park & Ride
- Bus Shuttles
- Signing / CMS's
- Public Information

# Kentucky Horse Park

SCOTT COUNTY

FAYETTE COUNTY



TRAFFIC

SE I75N  
POSSIBLE

CLOSED  
/EG SITE

1977

421

25

922

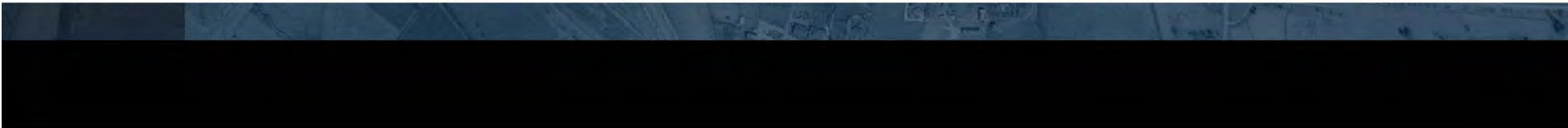
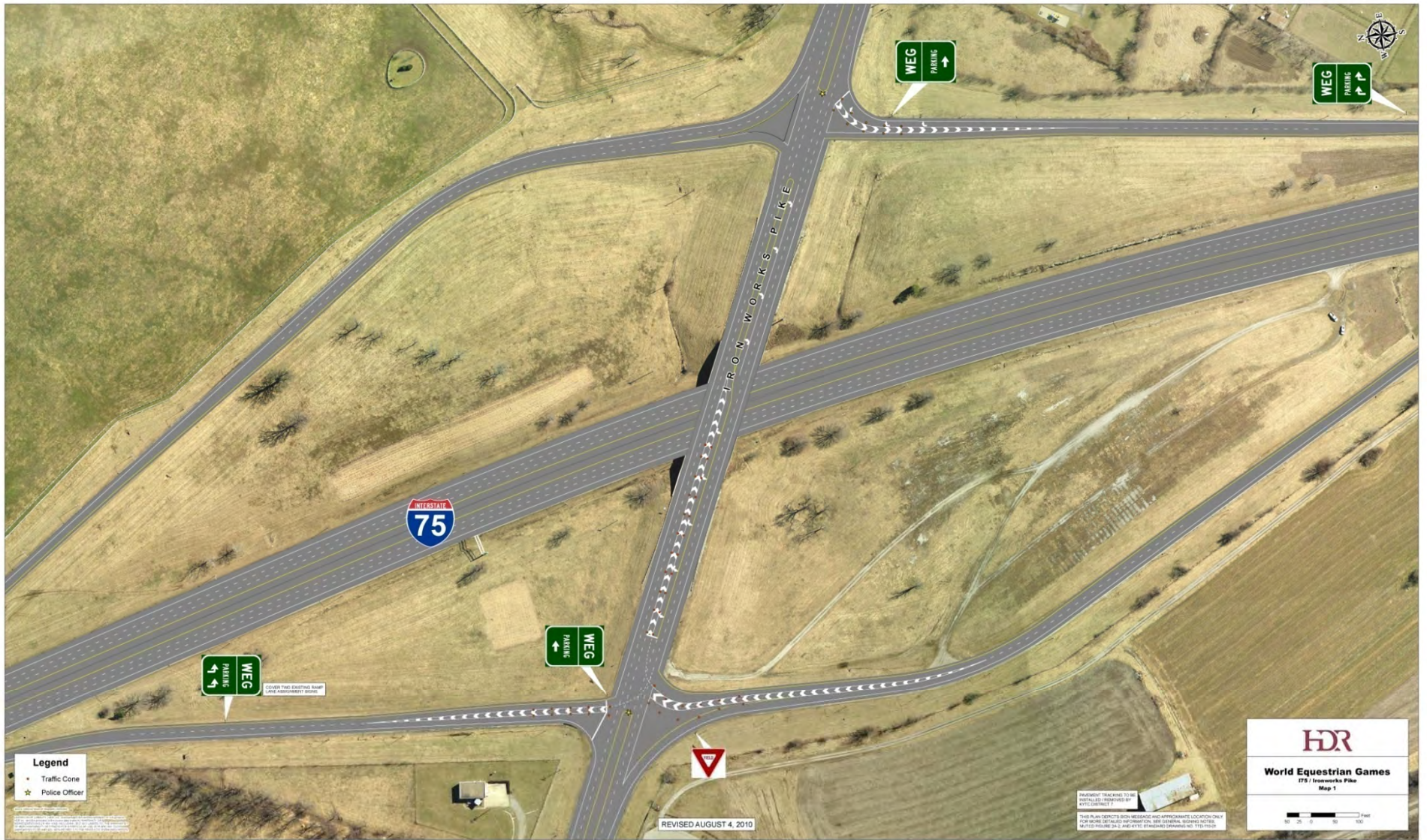
1973

64

75

27

CITATION BLVD





# Kentucky Horse Park



WEG  
PARKING  
→

CMS #15  
WEG  
PARKING  
USE 1735  
(Use Only On 1735 Commission)

CMS #5  
FOUR WEG  
PKG LOTS  
AHEAD


WEG  
PARKING  
BOTH  
LANES

- Legend**
- Traffic Cone
  - ★ Police Officer


Source: Kentucky Department of Transportation

REVISED AUGUST 4, 2010

THIS PLAN DEPICTS SIGN MESSAGE AND APPROXIMATE LOCATION ONLY. FOR MORE DETAILED INFORMATION, SEE GENERAL SIGNING NOTES, MUTCD FIGURE 2A-2, AND KYTC STANDARD DRAWING NO. TTD-110-01.



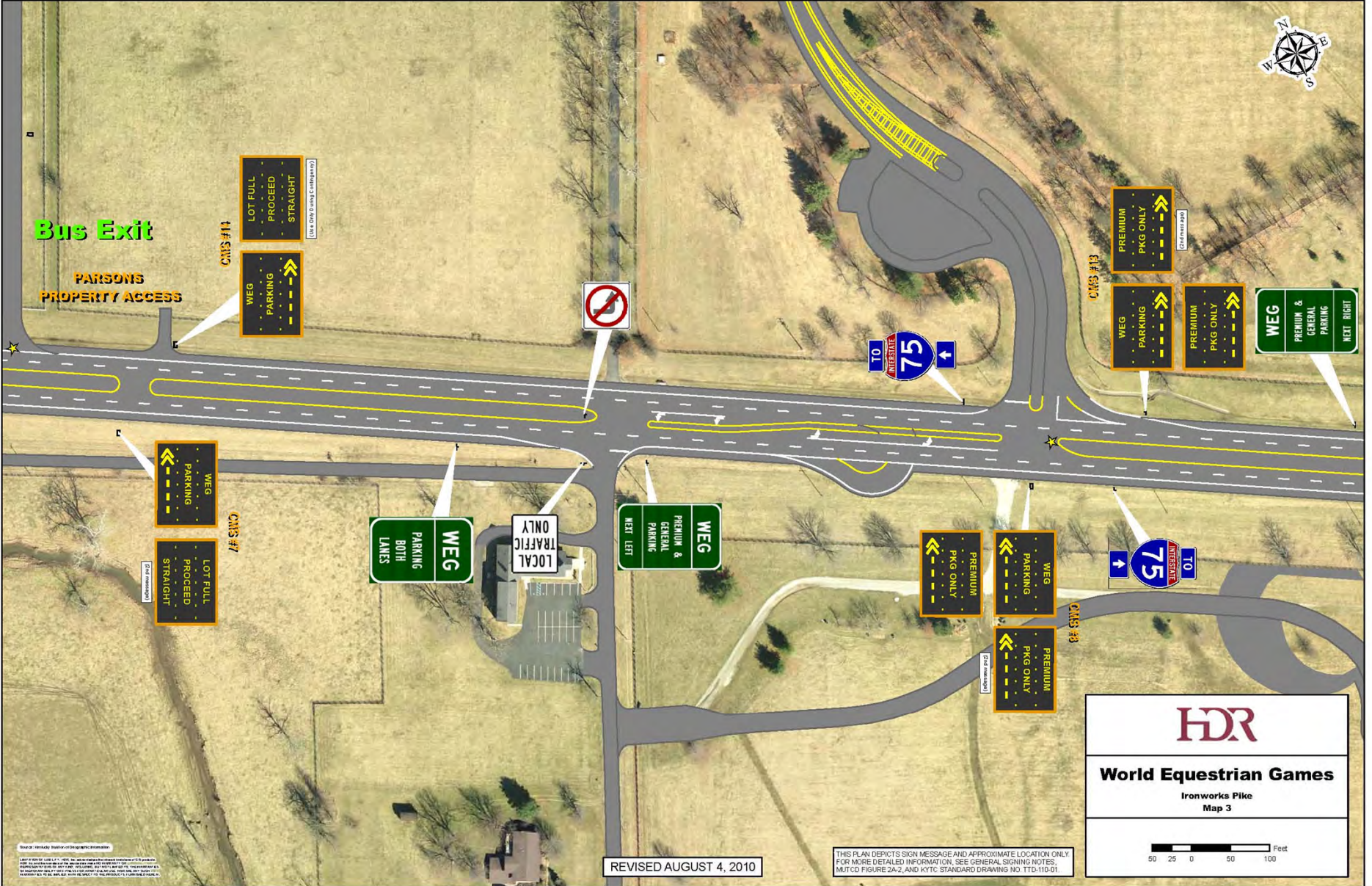
**World Equestrian Games**  
Ironworks Pike  
Map 1





Source: Kentucky Department of Transportation

DATE OF THIS PLAN: 08/04/10. THE DESIGNER HAS CONDUCTED VISUAL INSPECTIONS OF THE SITE AND HAS FOUND THE INFORMATION TO BE ACCURATE. THE DESIGNER HAS CONDUCTED VISUAL INSPECTIONS OF THE SITE AND HAS FOUND THE INFORMATION TO BE ACCURATE. THE DESIGNER HAS CONDUCTED VISUAL INSPECTIONS OF THE SITE AND HAS FOUND THE INFORMATION TO BE ACCURATE.



Bus Exit

PARSONS  
PROPERTY ACCESS

CMS #11

LOT FULL  
PROCEED  
STRAIGHT

WEG  
PARKING

(Use Only During Construction)

WEG  
PARKING

LOT FULL  
PROCEED  
STRAIGHT

CMS #7

WEG  
PARKING  
BOTH  
LANES

LOCAL  
TRAFFIC  
ONLY

WEG  
PREMIUM &  
GENERAL  
PARKING  
NEXT LEFT

TO  
INTERSTATE  
75

CMS #13

PREMIUM  
PKG ONLY

WEG  
PARKING

PREMIUM  
PKG ONLY

WEG  
PREMIUM &  
GENERAL  
PARKING  
NEXT RIGHT

TO  
INTERSTATE  
75

CMS #3

PREMIUM  
PKG ONLY

WEG  
PARKING

PREMIUM  
PKG ONLY

HDR

World Equestrian Games

Ironworks Pike

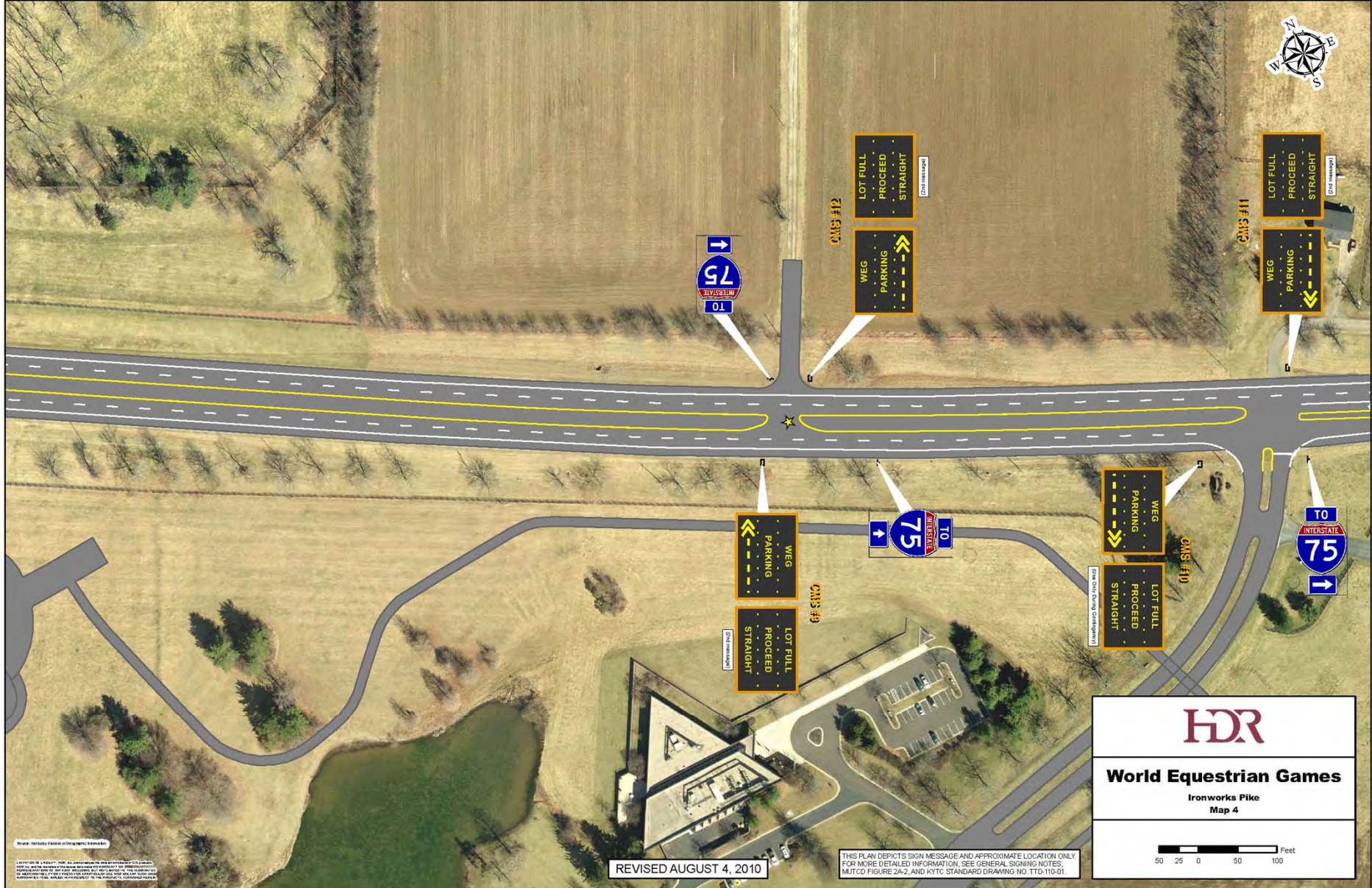
Map 3



REVISED AUGUST 4, 2010

THIS PLAN DEPICTS SIGN MESSAGE AND APPROXIMATE LOCATION ONLY. FOR MORE DETAILED INFORMATION, SEE GENERAL SIGNING NOTES, MUTCD FIGURE 2A-2, AND KYTC STANDARD DRAWING NO. TTS-115-01

© 2010 HDR Inc. All rights reserved. This drawing is the property of HDR Inc. and is not to be reproduced or transmitted in any form or by any means, electronic or mechanical, including photocopying, recording, or by any information storage and retrieval system, without the prior written permission of HDR Inc.



REVISED AUGUST 4, 2010

THIS PLAN DEPICTS SIGN MESSAGE AND APPROXIMATE LOCATION ONLY.  
 FOR MORE DETAILED INFORMATION, SEE GENERAL SIGNING NOTES,  
 MUTCD FIGURE 2A-2, AND KYTC STANDARD DRAWING NO. TTS-115-01.

**HDR**

**World Equestrian Games**  
 Ironworks Pike  
 Map 4

Feet  
 50 25 0 50 100

Source: Aerial Imagery and Geographic Information System Data.  
 This plan depicts sign message and approximate location only.  
 For more detailed information, see general signing notes,  
 MUTCD Figure 2A-2, and KYTC Standard Drawing No. TTS-115-01.



Source: Heroldy Moran of Geographic Enterprises  
 Copyright © 2010 Heroldy Moran of Geographic Enterprises

REVISED AUGUST 4, 2010

THIS PLAN DEPICTS SIGN MESSAGE AND APPROXIMATE LOCATION ONLY.  
 FOR MORE DETAILED INFORMATION, SEE GENERAL SIGNING NOTES,  
 MUTCD FIGURE 2A-2, AND KYTC STANDARD DRAWING NO. TTD-110-01

**HDR**

**World Equestrian Games**  
 Ironworks Pike  
 Map 5

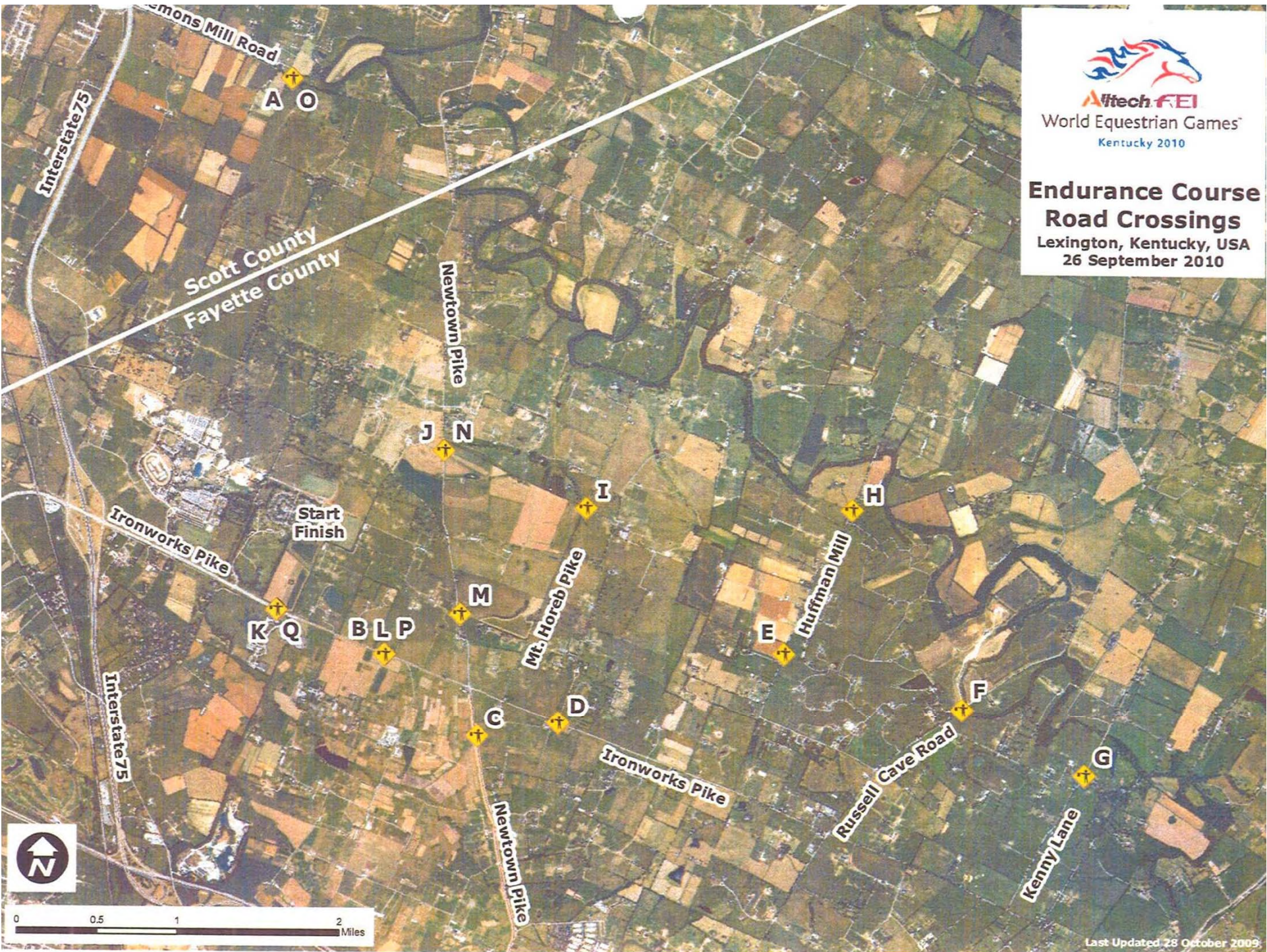
400 200 0 400 800 Feet



**Altech FEI**  
World Equestrian Games™  
Kentucky 2010

### Endurance Course Road Crossings

Lexington, Kentucky, USA  
26 September 2010



Last Updated: 28 October 2009

# WORLD EQUESTRIAN GAMES



## TRANSPORTATION PLAN UPDATE

# WEG/District 7 Roadway Improvements



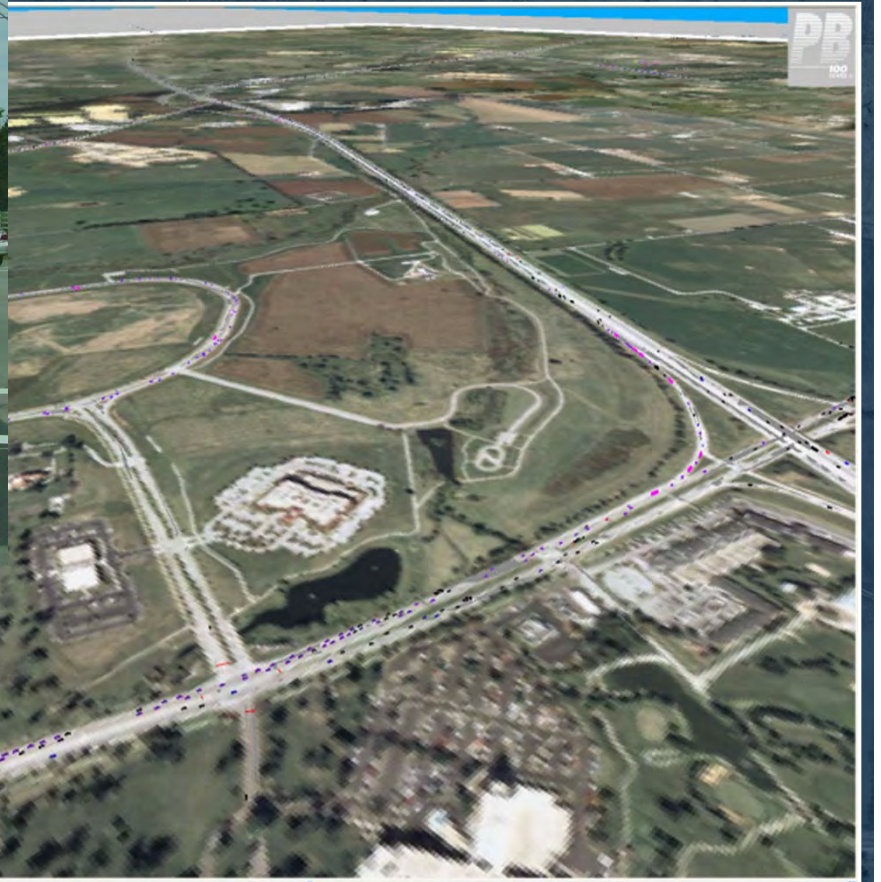
# WEG / Lexington / District 7 Improvements



Iron Works Pike Improvements

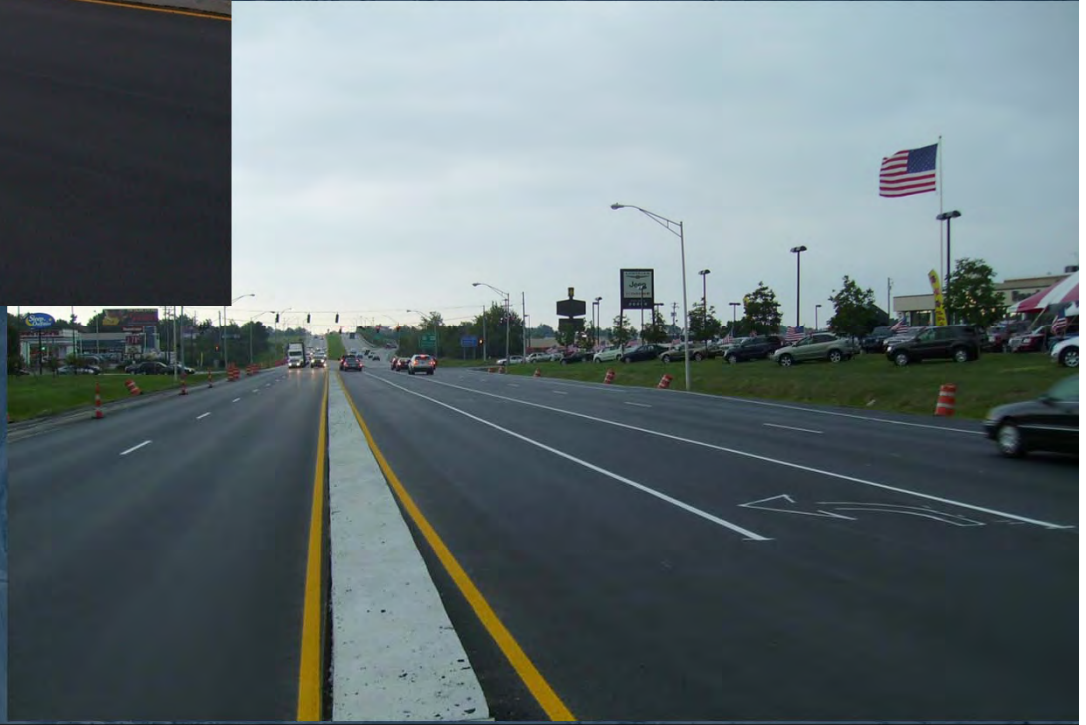
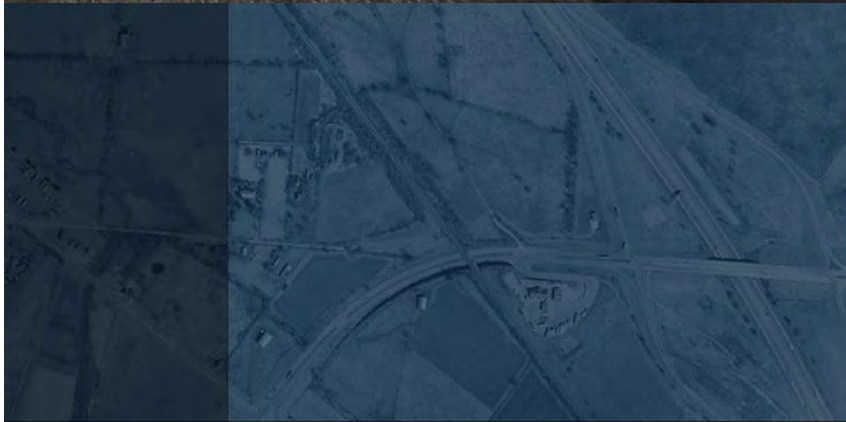


# WEG / Lexington / District 7 Improvements



Newtown Pike Slip Lane @ I-75 to Aristides

# WEG / Lexington / District 7 Improvements



**New Circle Road – Richmond Rd to Winchester Road**

# WEG / Lexington / District 7 Improvements



Newtown Pike Extension

# WEG / Lexington / District 7 Improvements



**Vine Street & Main Street Sidewalks**

# WEG / Lexington / District 7 Improvements



Limestone Street

# WEG / Lexington / District 7 Improvements



**Newtown Pike – I-75 to Iron Works**

# WORLD EQUESTRIAN GAMES



## TRANSPORTATION PLAN UPDATE

44 Days And Counting

